

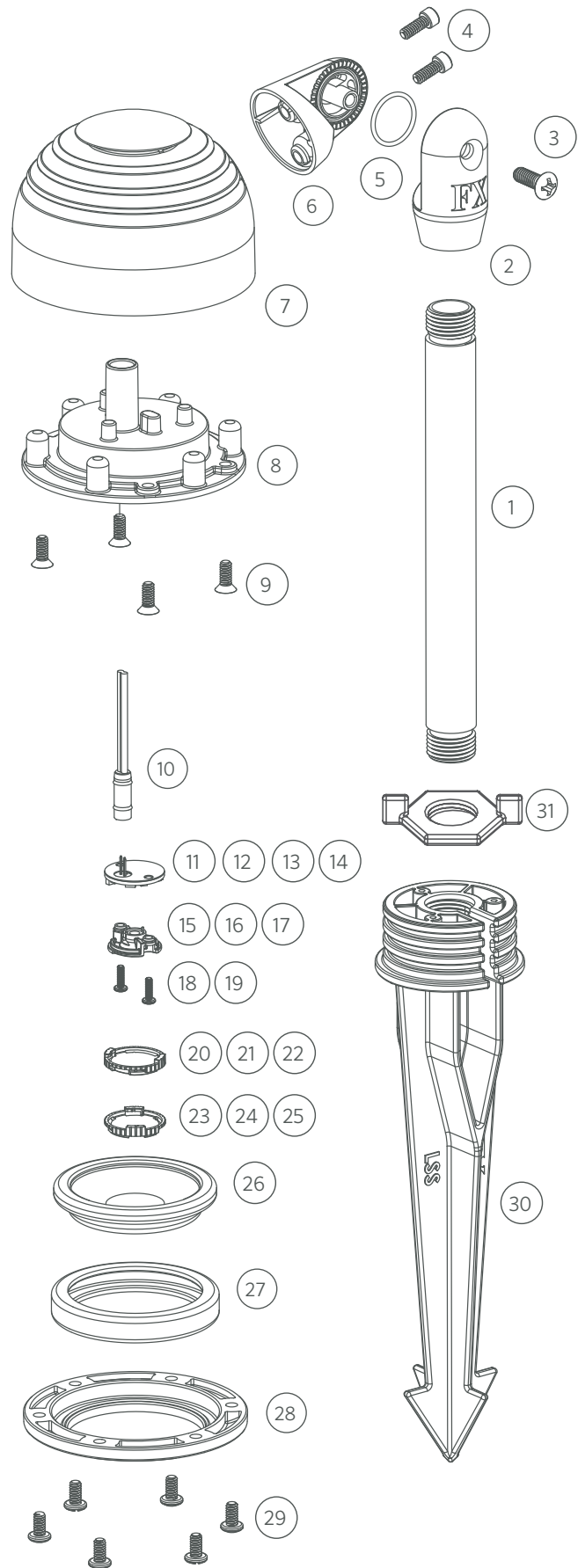
Replacement Parts

ITEM	DESCRIPTION	CATALOG #
1	Riser, Aluminum	YY [‡] RXX*
2	Knuckle Subassembly (Male)	KFM050XX*
2	Knuckle Subassembly (Female)	KFF050XX*
3	Screw, ¼"-20 x ¾"	250010290000
4	Screw, #10-24 x ¾"	250013940000
5	O-Ring	250010280002
6	Base	†
7	Body	†
8	Insert	†
9	Screw	250020010000
10	Socket, 1.5-meter	†
11-14	LED Board	See LED Chart
15-17	Reflector	See LED Chart
18-19	Screw	See LED Chart
20-22	Color Filter	See LED Chart
23-25	Diffuser	See LED Chart
26	Glass Lens, Frosted	250014240001
27	Seal	250014250000
28	Faceplate	FCFPRGXX*
29	Screw, #10-24 x ¾"	250015870000
30	Long Slot Spike	250015840000
31	Lock Ring	250030410000

‡ YY = Riser height in inches

* XX = Finish code

† This part is not serviceable. Contact Customer Support or a local distributor to order a new product.



DESIGNER | PATH LIGHT | RW

LED Chart

ITEM	DESCRIPTION	CATALOG #
11	1LED Board	1LEDULKIT [‡]
12	3LED Board	3LEDULKIT [‡]
13	6LED Board	6LEDULKIT [‡]
14	9LED Board	9LEDULKIT [‡]
14	ZDC LED Board	ZDCKITL ^{**}
15	1LED Reflector	770000
16	3LED Reflector	770700
17	6LED/9LED Reflector	771400
17	ZDC LED Reflector	250020690000
18	1LED/3LED Screw, #4-40 x 3/8" (Qty Req: 2)	762400
19	6LED/9LED Screw, #4-40 x 7/16" (Qty Req: 3)	250014550000
20	1LED Color Filter, Amber	770100
20	1LED Color Filter, Blue	770101
20	1LED Color Filter, Green	770102
21	3LED Color Filter, Amber	770800
21	3LED Color Filter, Blue	770801
21	3LED Color Filter, Green	770802
22	6LED/9LED Color Filter, Amber	771500
22	6LED/9LED Color Filter, Blue	771501
22	6LED/9LED Color Filter, Green	771502
23	1LED Spot Lens (18°)	770600
23	1LED Flood Lens (30°-32°)	1LEDFLENS
23	1LED Wide Flood Lens (56°-58°)	1LEDWFLENS
24	3LED Spot Lens (18°)	771300
24	3LED Flood Lens (30°-32°)	3LEDFLENS
24	3LED Wide Flood Lens (56°-58°)	3LEDWFLENS
25	6LED/9LED Spot Lens (18°)	771600
25	6LED/9LED Flood Lens (30°-32°)	9LEDFLENS
25	6LED/9LED Wide Flood Lens (56°-58°)	9LEDWFLENS
26	Lock Ring	250030410000

[‡] ZD = Zoneable and dimmable (add ZD to front of part number)

^{**} ZDC kit includes LED board, reflector, screws, and flood lens (9LEDFLENS)

