



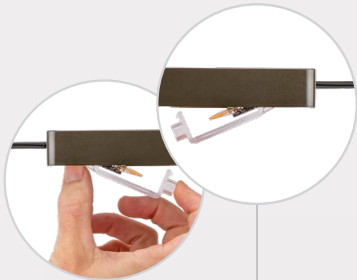
LD LED Ledge Light

STANDARD BASE

KEY BENEFITS

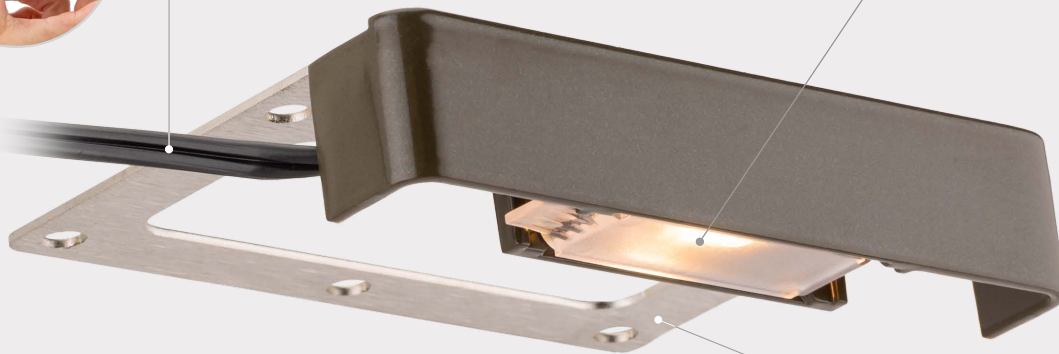
Versatile Wire Position

For maximum installation flexibility, the lens module is installable with the wire coming out of the left or right side of the fixture.



Simple Replacement

The socket, lens, and lamp remove in a single module, making it easy to see the socket when replacing the unit.



Seamless Installation

Use the helpful, built-in installation guidelines to simplify installation on any surface.

Premium Construction

Sturdy aluminum construction with two-layer anodization and a TGIC powder-coat finish ensures top performance in a range of applications.



<https://fxl.com/LD>

FXLuminaire®

WHEN DESIGNING

Challenge: Due to low mounting heights, ledge lights often generate a hot spot under the light source.

Solution: The light output of the LD Ledge Light is diffused with a frosted lens for a soft, even glow.



WHEN INSTALLING

Challenge: For hardscaping that requires mortar and drilling, correct installation is essential on the first attempt.

Solution: The conveniently designed LD Ledge Light has built-in installation guidelines, slotted holes, and a bidirectional wire for easy adjustments in any setting.



WHEN SERVICING

Challenge: Downward-facing ledge lights have a small profile and are often installed in tight spaces. This makes servicing difficult and reliant on touch.

Solution: The LD Ledge Light's wire, socket, lens, and lamp are fully removable from the fixture to allow for tool-free servicing.



LEDGE LIGHT COMPARISON

FEATURES	LD Ledge Light	Competitor 1	Competitor 2	Competitor 3	Competitor 4
Tool-Free Servicing	●				
Removable Bracket	●			●	●
Serviceable LED Module	●	●	●		
Lamp Type	G4 LED lamp	Integrated	Integrated	Integrated	Integrated
Bidirectional Wire Position	●				
Finish Options	9	2	3	5	1
Lead Wire Length	10' (3.0 m)	8' (2.4 m)	10' (3.0 m)	7' (2.1 m)	10' (3.0 m)